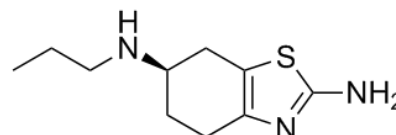


Product Name : Dexpramipexole
Cat. No. : PC-45175
CAS No. : 104632-28-2
Molecular Formula : C₁₀H₁₇N₃S
Molecular Weight : 211.3271
Target : Dopamine Receptor
Solubility : 10 mM in DMSO



Biological Activity

A partial/full agonist of dopamine receptor with K_i of 3.9/2.2/0.5/5.1 nM for D_{2S}/D_{2L}/D₃/D₄, respectively; also possesses low/insignificant affinity (500–10,000 nM) for the 5-HT_{1A}, 5-HT_{1B}, 5-HT_{1D}, and α₂-adrenergic receptors; used for treating Parkinson's disease (PD) and restless legs syndrome (RLS).

Alzheimer's Disease

Phase 2 Clinical

References

Alavian KN, et al. Brain Res. 2012 Mar 29;1446:1-11.

Cudkowicz M, et al. Nat Med. 2011 Nov 20;17(12):1652-6.

Bozik ME, et al. J Clin Pharmacol. 2011 Aug;51(8):1177-85.

Caution: Product has not been fully validated for medical applications. Lab Use Only!

E-mail: tech@probechem.com